

What Is Age-related Macular Degeneration (AMD)?



AMD is a sight-threatening retinal disease, predominantly macular, that is usually progressive. It generally occurs at age 55 or older and is associated with multiple environmental and genetic factors.

AMD is divided into early and late stages. Early AMD is of the dry type, characterised by relatively good visual function and the presence of drusen and/or pigment epithelial changes with a variable risk of progression to late disease.

Late AMD can be either of the dry or the wet type and is usually characterised by significant loss of vision. The clinical signs are geographic atrophy, neovascularisation or pigment epithelial detachment.



- Definition by the Scientific Advisory Panel of the AMD Alliance International



Normal macula

Drusen



Dry AMD (Early AMD)

Multiple yellowish deposits called drusen are present in the macula

Slight Bleeding



Wet AMD (Late AMD)

Abnormal new blood vessels and slight bleeding in the macula

Severe Bleeding



Wet AMD (Late AMD)

Abnormal new blood vessels and severe bleeding in the macula

Macular atrophy



Geographic Atrophy (Late AMD)

Severe loss of important light-sensing cells in the macula

Macular scar



Wet AMD (Late AMD)

Severe scarring of the macula in the late stages of wet AMD

What is Myopic Macular Degeneration?

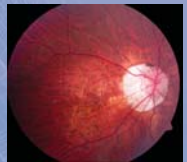
Myopic macular degeneration is a sight threatening retinal disease associated with high myopia (≥ -6.00 Dioptres) that affects the most light sensitive central portion of the retina, the macula.

Early myopic macular degeneration is of the dry type and is characterised by the presence of early atrophic areas in the macula.

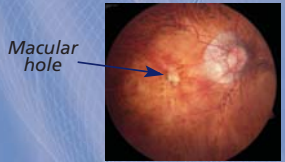
Late myopic macular degeneration can be either of the dry or the wet type and is usually characterised by significant loss of vision. The dry type is characterised by complications such as severe macular atrophy, macular holes and macular retinal detachment. The wet type is associated with bleeding and scarring in the macula due to growth of abnormal new blood vessels under the retina.



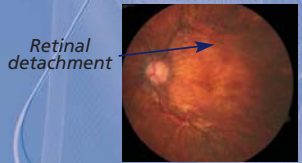
Normal macula



Moderate myopic macular degeneration



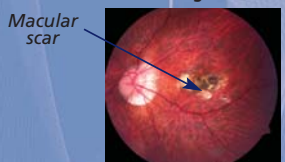
Myopic macular degeneration with macular hole



Myopic macular degeneration with macular retinal detachment



Bleeding in the macula due to wet myopic macular degeneration



Scarring at macula due to severe myopic macular degeneration